

## $\beta$ -catenin(G48D)

**Catalog Number:** 26166

**Gene Symbol:** CTNNB1, CTNNB

**Description:** Anti- $\beta$ -catenin(G48D) Mouse Monoclonal Antibody

**Background:** Beta-catenin (or  $\beta$ -catenin) is a protein that in humans is encoded by the CTNNB1 gene.  $\beta$ -catenin is a subunit of the cadherin protein complex and also acts as an intracellular signal transducer in the Wnt signaling pathway. Deregulation of beta-catenin signaling is an important event in the genesis of a number of malignancies, such as colon cancer, melanoma, hepatocellular carcinoma, ovarian cancer, endometrial cancer, medulloblastoma pilomatricomas, and prostate cancer.

**Immunogen:** A synthetic peptide from the internal region of  $\beta$ -catenin, which includes the mutation of E53K, human origin.

**Tested Applications:** ELISA, WB, IF, IHC

**Recommended Dilutions:**

ELISA:	1:1000-1:5000
WB:	1:500-1:2000
IF:	1:50-1:100
IHC:	1:50-1:100

**Concentration:** 1 mg/ml

**Host:** Mouse

**Clonality:** Monoclonal

**Isotype:** IgG

**Purity:** Purified from ascites

**Format:** Liquid

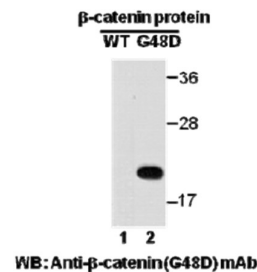
**Preservative:** No

**Constituents:** PBS (without  $Mg^{2+}$  and  $Ca^{2+}$ ), pH7.4, 150 mM NaCl, 50% glycerol

**Species Reactivity:** Recognizes  $\beta$ -catenin(G48D), but not wild type  $\beta$ -catenin protein from vertebrates.

**Storage Conditions:** Store at  $-20^{\circ}C$ . Avoid repeated freezing and thawing

**Western blot:**

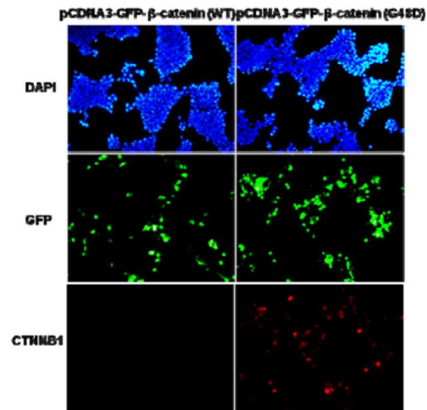


FOR RESEARCH USE ONLY. NOT FOR DIAGNOSTIC APPLICATIONS

A helping hand for your research

---

## Immunofluorescence:



### Immunofluorescence of cells expressing $\beta$ -catenin proteins with anti- $\beta$ -catenin (G48D) antibody.

HEK293T cells were transfected with pCDNA3-GFP- $\beta$ -catenin (WT) plasmid (left column) or pCDNA3-GFP- $\beta$ -catenin(G48D) plasmid (right column), then fixed and stained with anti-  $\beta$ -catenin(G48D) monoclonal antibody (Cat. # 26166).

---

FOR RESEARCH USE ONLY. NOT FOR DIAGNOSTIC APPLICATIONS